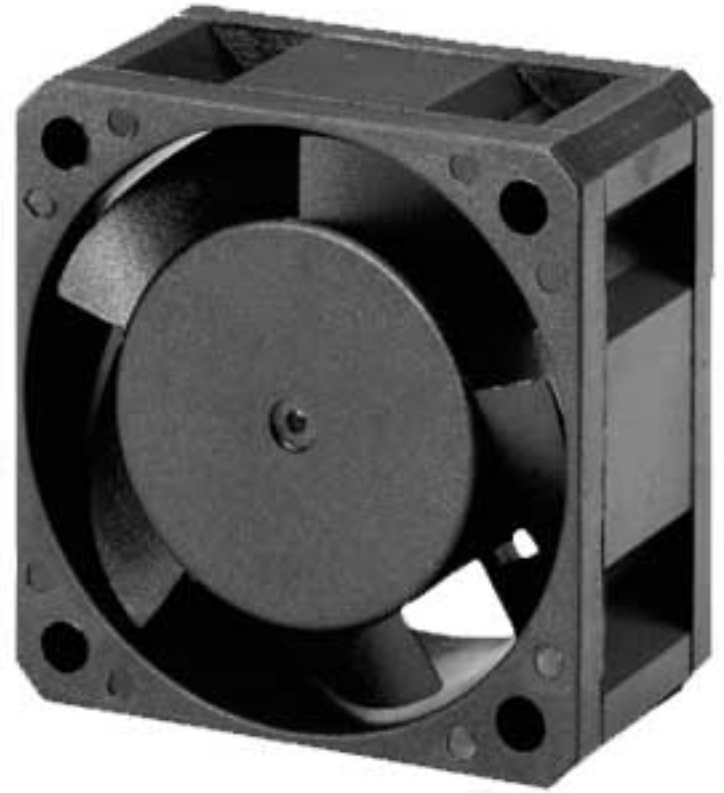


# FP-108-G/DC

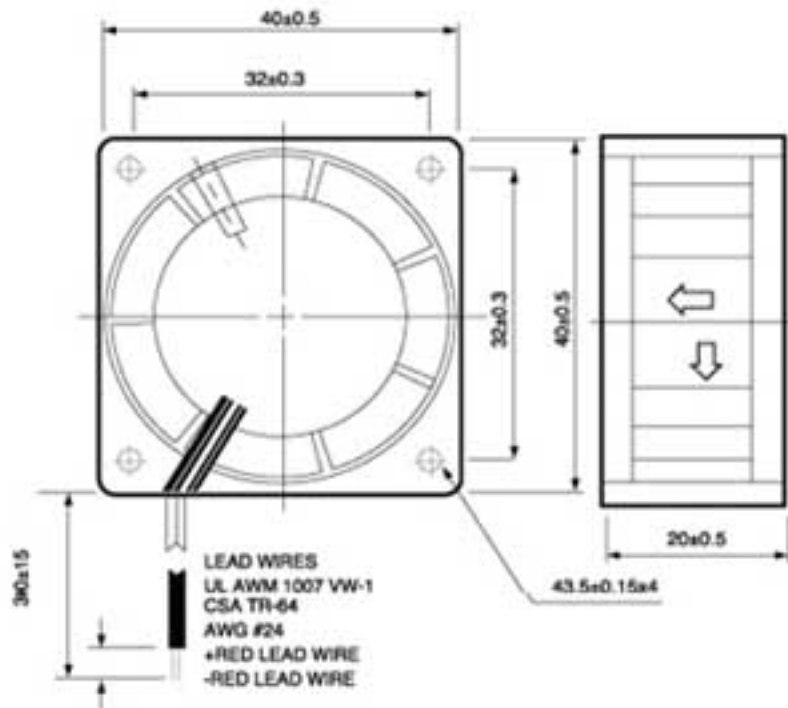
40 x 40 x 20 mm

## DESIGN FEATURES

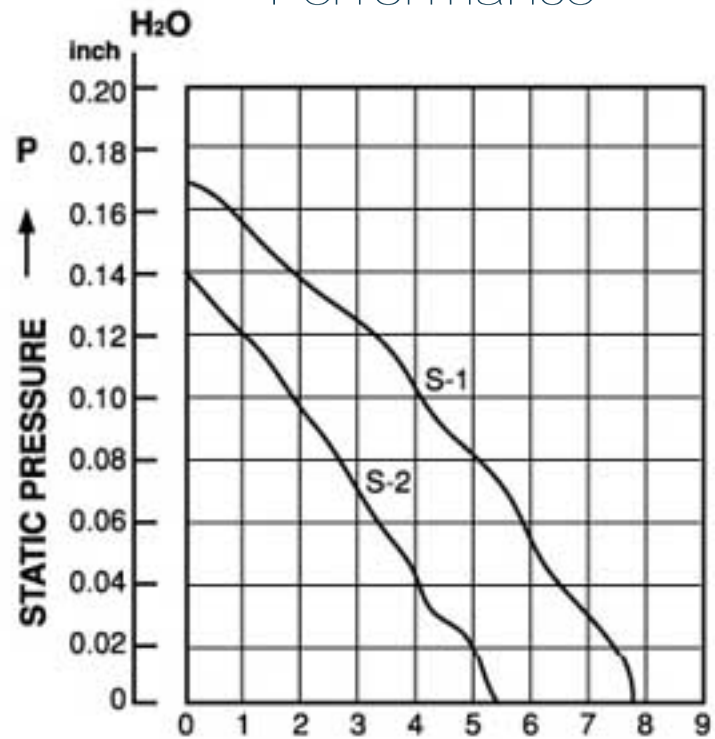
- \* **Bearing System:**  
Sleeve bearing & ball bearing
- \* **Impeller:**  
Plastic with fiber glass filed UL 94V-0
- \* **Housing:**  
Plastic with fiber glass filed UL 94V-0
- \* **Motor:**  
Brushless DC
- \* **Connecting:**  
Wire leads
- \* **Speed:**  
S-1 high speed type  
S-2 medium speed type
- \* **Available FG Type for Speed Sensor Signal**



Dimensions: mm



Performance



## Specifications

MODEL NO.	VOLTAGE (VDC)	AIR (CFM)	VOLUME (M <sup>3</sup> /MIN)	CURRENT (A)	POWER (W)	SPEED (RPM)	STATIC PRESSURE (INCH-H <sub>2</sub> O)	NOISE (dBA)
FP-108G/DC (S-1)	5	7.80	0.22	0.25	1.25	7000	0.17	31
	12	7.80	0.22	0.10	1.20	7000	0.17	31
	24	7.80	0.22	0.09	2.16	7000	0.17	31
FP-108G/DC (S-2)	5	5.40	0.15	0.12	0.60	5000	0.14	23
	12	5.40	0.15	0.09	1.08	5000	0.14	23
	24	5.40	0.15	0.07	1.68	5000	0.14	23